

LUXEN



Premium Gearless Elevators

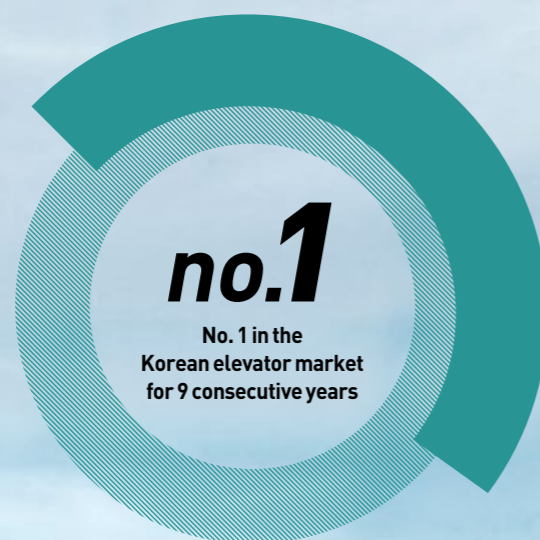
LUXEN

ELEVATOR MARKET SHARE  
IN KOREA

HYUNDAI ELEVATOR

**43.8%**

(Units installed, 2015)



HYUNDAI ELEVATOR **LUXEN**

**One out of two elevators  
sold in Korea is  
made by Hyundai Elevator**

and Luxen is  
Hyundai Elevator customers'  
preferred choice

**LUXEN**



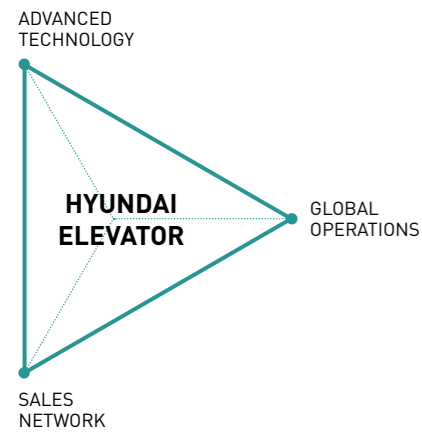
**LU**crative



**EN**vironmentally  
Friendly

Maximum operating efficiency  
for environmental protection  
and greater economy

# There is a reason why Hyundai Elevator is customers' preferred choice



## MANUFACTURING PLANTS

### Icheon Headquarters (Icheon, Korea)

- [Factories 1, 2, 3] 46,484 m<sup>2</sup> state-of-the-art facilities
- Production of elevators, automated material handling system, parking systems, platform screen doors (PSD), etc.
- Hyundai Asan Tower
- Hyundai Customer Care Center (CCC)

### China Factory (Shanghai, China)

- 28,716 state-of-the-art facilities
- Production of elevators and escalators
- Elevator test tower (72 m high)

### Brazil Factory (São Leopoldo, Brazil)

- 13,337 m<sup>2</sup> state-of-the-art facilities
- Production of elevators

## World-class elevator technology

Hyundai Elevator has the world's most advanced high-speed elevator technology. It built Hyundai Asan Tower, the world's tallest elevator test tower, in April 2009 to thoroughly evaluate and validate the safety and reliability of its products under conditions that closely replicate those of a high-rise building.

### THE EL 1080 high-speed elevator

The world's fastest elevator (1,080 m/min.)

### THE EL DUO double-deck elevator

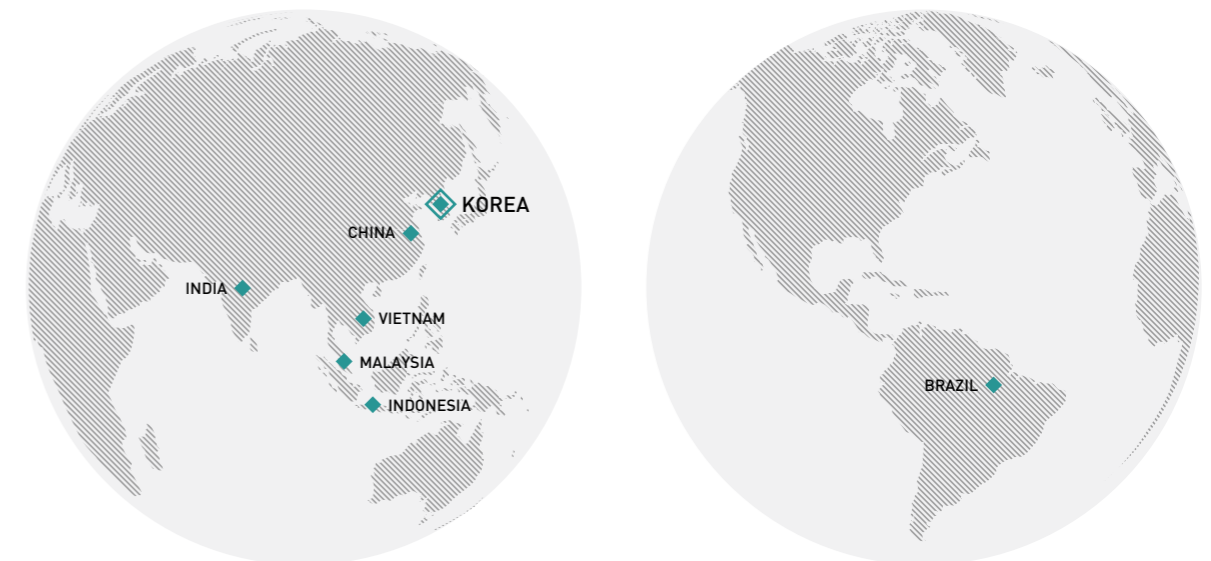
1.8 times more loading capacity through 2 vertically integrated elevators

## Production system and sales network that spans across borders

In addition to state-of-the-art production facilities in Korea, Hyundai Elevator built manufacturing facilities in China and Brazil to supply its unparalleled products worldwide. The company strives to better meet the needs of global customers through localization and by maximizing synergy among its 6 overseas subsidiaries and 58 sales networks.

### OVERSEAS BRANCHES

CHINA	SHANGHAI HYUNDAI ELEVATOR CO., LTD.
INDONESIA	PT. HYUNDAI ELEVATOR INDONESIA
INDIA	KINETIC HYUNDAI ELEVATOR & MOVEMENT TECHNOLOGIES LIMITED
MALAYSIA	HYUNDAI ELEVATOR (MALAYSIA) SDN. BHD
BRAZIL	HYUNDAI ELEVADORES DO BRASIL LTDA.
VIETNAM	HYUNDAI THANH CONG ELEVATOR VIETNAM CO., LIMITED

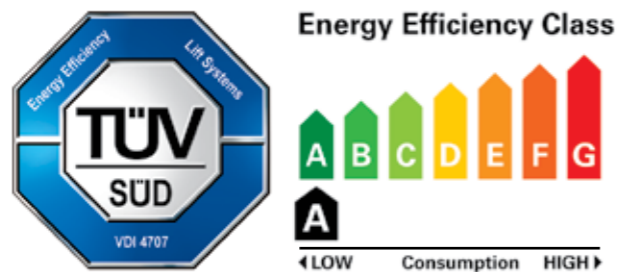


## LUXEN INNOVATION 1

# HIGHEST EFFICIENCY & SAFETY

Hyundai Elevator's core technologies have optimized the conditions to operate an elevator

The 1st Korean elevator to earn Germany's Class A energy efficiency rating



Luxen earned Class A energy efficiency ratings, the highest under the guidelines of the Association of German Engineers (VDI), from Germany's prestigious testing and certification agency, TÜV SÜD.



## VDI 4707 Part 1

VDI 4707 Part 1 is an internationally recognized energy efficiency certification for elevators based on criteria such as capacity, speed, operational cycle, energy consumption, and average travel distance. There are 7 energy efficiency ratings, ranging from A for the least amount of consumption, to G, the highest.



## 1 High efficiency, gearless, synchronous traction machine

### Energy savings

The synchronous gearless traction machine has a motor that uses permanent magnets and consumes 25% less energy than induction motors.

### Exceptional ride quality

Noise and vibration are significantly reduced with the elimination of interlocking gears, providing extraordinary riding comfort.

### Easy Maintenance

The gearless traction machine does not use gear oil and is easy to maintain, eliminating the need for oil changes and reducing maintenance costs.



## 2 Regenerative inverter that recycles energy (optional)

### Up to 60% energy savings (PWM Type)

Energy generated while operating the elevator is recycled for up to 60% in energy savings (77.5% energy efficiency).

### Machine room heat reduction

Machine room heat is greatly reduced by recycling power generated while operating the elevator instead of dissipating heat.



## 3 Permanent magnet synchronous motor doors with a low breakdown rate

A permanent magnet synchronous motor simplifies the elevator doors' structure to reduce breakdowns, curtail noise, and open and close doors gently. Low energy consumption cuts down maintenance costs.



## 4 Eco-friendly LED ceiling



Ultra-slim LED ceiling lights are long-lasting, consume little power, and reduce eye fatigue.

\* Not applicable on certain ceiling options.

## 5 Highly reliable dual brakes

Dual braking system allows brakes on one side to operate independently if brakes on the other side fail, improving safety significantly (**conforms to European EN81 international safety standards**).

## LUXEN INNOVATION 2

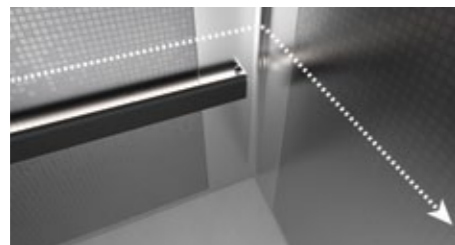
# SMART DESIGN

Design and technology offer differentiated value



## The Round Corner design that appeases the mind (optional)

Hyundai Elevator's iconic Round Corner design harmoniously blends curved lines and straight lines to enhance the product's beauty and convey a sense of security, while establishing the company's product identity (PI).



## Smart Indicator that keeps passengers informed (optional)

Hyundai Elevator's world first Smart Indicator is a LCD screen that easily conveys diverse information such as time and date. In addition, a built-in anion, double-clean system and ultrasonic pest protection feature provide year-round comfort throughout all 4 seasons.



## Antiviral handrails that protect the health of passengers (optional)

Ergonomic handrails, thoughtfully designed through comprehensive behavioral analysis to promote the safety and comfort of passengers, are made with antiviral materials that safeguard users from harmful viruses.



## Operational panel with integrated Welcome System that thoughtfully greets passengers (optional)

Welcome System is a smart system that includes a communication function that welcomes passengers when they come aboard and automatically illuminates the control buttons for greater visibility.





LUXEN DESIGN COLLECTION  
► LXD-01

CAGE DESIGN

Ceiling	CD399A/Barrisol, Sub Ceiling (Painted Steel P022), LED Lighting, Ceiling Plate (Painted Steel P024)
Car Wall	STS Bead Blast, Art Metal Black (AM01), Embo STS (EP01)
Handrail	1LB/Anti-Virus Bar (Metallic Black), Aluminium Bracket, LED Lighting (Option)
Car Door	STS Bead Blast
Car Operating Panel Indicator	OPP-N270A (Swing Type)/STS Bead Blast PI-L210/Anion Air Cleaner, Ultrasonic Pest Repellent
Flooring	LXD-01 /Marble (By Local)



ENTRANCE

200U TYPE

Jamb	STS Bead Blast/200U Type
Transom Panel	STS Bead Blast
Door	STS Bead Blast
Hall Button	HTB-C100
Indicator	PI-D900

100 TYPE

Jamb	STS Bead Blast/100 Type
Door	STS Bead Blast
Hall Button	HIT-DC100

50 TYPE

Jamb	STS Bead Blast/50 Type
Door	STS Bead Blast
Hall Button	HIT-DC100



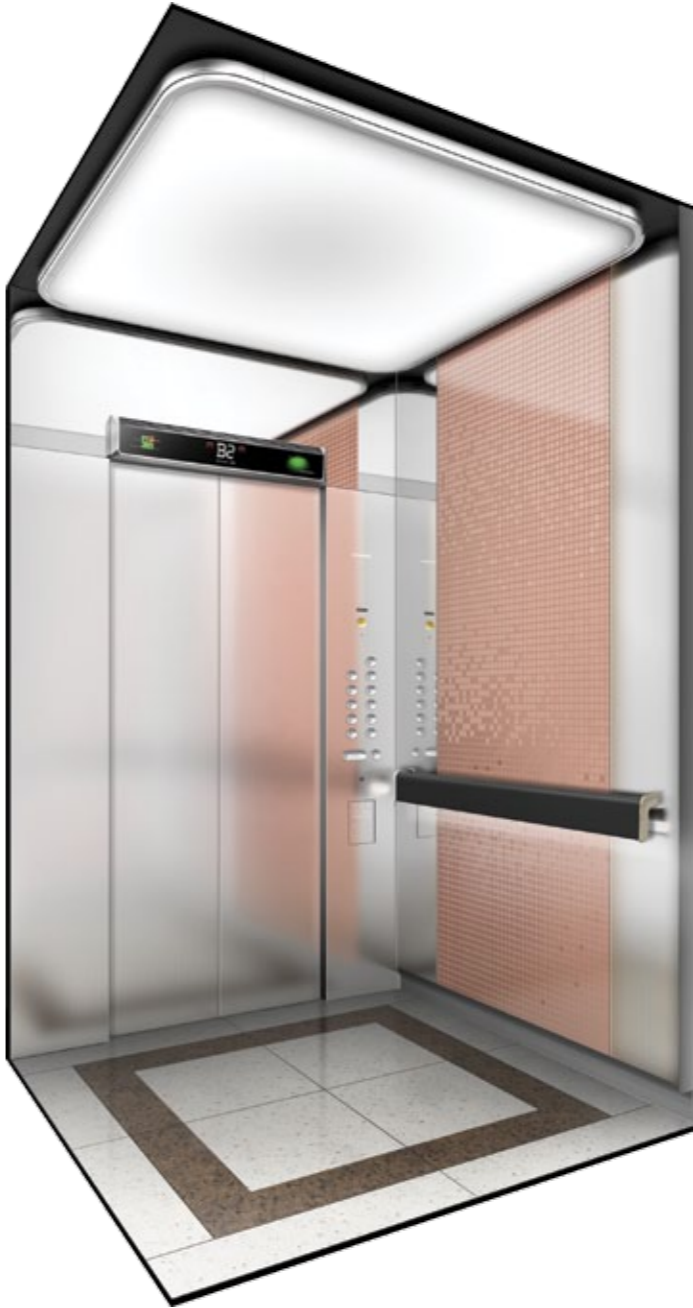
200U TYPE

100 TYPE

50 TYPE

Note

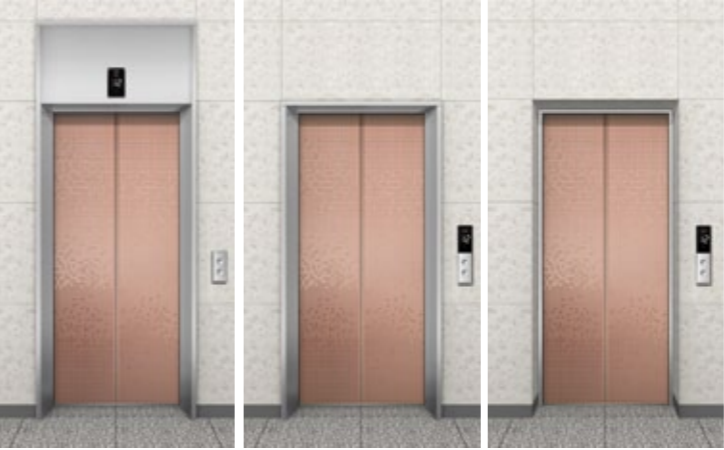
- Colors printed in this catalog may appear different from actual colors.
- For 10 passenger (700 kg) models and smaller, the central wall pattern on the inner surface of side panels may be omitted due to the division line between the 2 panels.
- For 11 passenger (750 kg) models and smaller, swing-type operating panels may not fit due to the narrow width of the front wall.



LUXEN DESIGN COLLECTION  
► LXD-02

CAGE DESIGN

Ceiling	CD319A/Aluminium (Silver), Barrisol, LED Lighting, Ceiling Plate (Painted Steel P022)
Car Wall	STS Bead Blast, Art Metal Bronze (AM07), STS Mirror
Handrail	1LB/Anti-Virus Bar (Metallic Black), Aluminium Bracket, LED Lighting (Option)
Car Door	STS Bead Blast
Car Operating Panel	OPP-N266A (Swing Type)/STS Bead Blast
Indicator	PI-L210/Anion Air Cleaner, Ultrasonic Pest Repellant
Flooring	LXD-02/Marble (By Local)



200U TYPE

100 TYPE

50 TYPE

ENTRANCE

200U TYPE

Jamb	STS Bead Blast/200U Type
Transom Panel	STS Bead Blast
Door	Art Metal Bronze (AM07)
Hall Button	HPB-B66
Indicator	PI-L800

100 TYPE

Jamb	STS Bead Blast/100 Type
Door	Art Metal Bronze (AM07)
Hall Button	HIP-LB66

50 TYPE

Jamb	STS Bead Blast/50 Type
Door	Art Metal Bronze (AM07)
Hall Button	HIP-LB66

Note

1. Colors printed in this catalog may appear different from actual colors.
2. For 10 passenger (700 kg) models and smaller, the central wall pattern on the inner surface of side panels may be omitted due to the division line between the 2 panels.
3. For 11 passenger (750 kg) models and smaller, swing-type operating panels may not fit due to the narrow width of the front wall.
4. Please refer to page 24 for ceiling options for emergency elevators.

LUXEN DESIGN COLLECTION

► LXS-01

CAGE DESIGN

Ceiling	CD219A/Painted Steel (P022), Skylite 10T
Car Wall	STS Hairline, STS Hairline Etching (SE2302), STS Mirror Etching (SE2302)
Handrail	1FB/Anti-Virus 1Pipe (Metallic Black), Aluminium Bracket
Car Door	STS Hairline Etching (SE2302)
Car Operating Panel	OPP-N282A/STS Hairline
Indicator	PI-D110
Flooring	LXS-01 (Deco Tile - DTE2251, DTE2246)



200U TYPE      100 TYPE      50 TYPE

ENTRANCE

<b>200U TYPE</b>	
Jamb	STS Hairline/200U Type
Transom Panel	STS Hairline
Door	STS Hairline Etching (SE2302)
Hall Button	HPB-882/STS Hairline
Indicator	PI-D110

<b>100 TYPE</b>	
Jamb	STS Hairline/100 Type
Door	STS Hairline Etching (SE2302)
Hall Button	HIP-D882/STS Hairline

<b>50 TYPE</b>	
Jamb	STS Hairline/50 Type
Door	STS Hairline Etching (SE2302)
Hall Button	HIP-D882/STS Hairline

**Note**

1. Colors printed in this catalog may appear different from actual colors.

2. For 10 passenger (700 kg) models and smaller, the central wall pattern on the inner surface of side panels may be omitted due to the division line between the 2 panels.

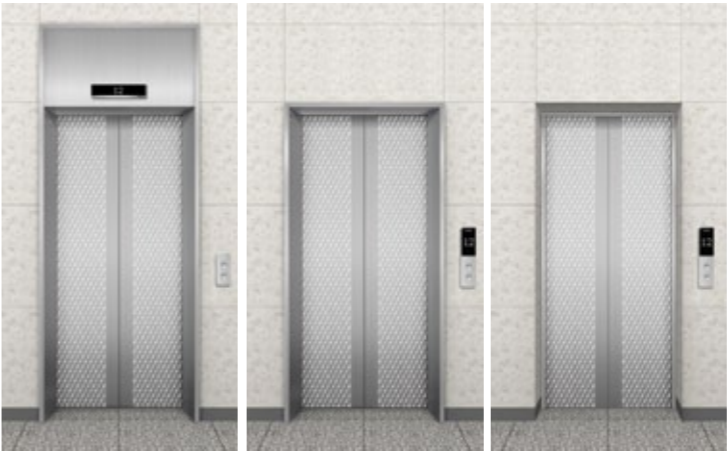
3. For 11 passenger (750 kg) models and smaller, the operating panel may need to be installed on the side walls due to the narrow width of the front wall.

LUXEN DESIGN COLLECTION

► LXS-02

CAGE DESIGN

Ceiling	CD199A/Aluminium (Silver), PC ABS, LED Lighting, Ceiling Plate (Painted Steel P021)
Car Wall	STS Hairline, STS Hairline Etching (SE2312), STS Mirror Trim (30 mm)
Handrail	1FG/Anti-Virus 1Pipe (Dark Gray), Aluminium Bracket
Car Door	STS Hairline Etching (SE2312)
Car Operating Panel	OPP-N264A/STS Hairline
Indicator	PI-D700
Flooring	LXS-02 (Deco Tile - DTE2126)



200U TYPE      100 TYPE      50 TYPE

ENTRANCE

<b>200U TYPE</b>	
Jamb	STS Hairline/200U Type
Transom Panel	STS Hairline
Door	STS Hairline Etching (SE2312)
Hall Button	HPB-A64
Indicator	PI-D700

<b>100 TYPE</b>	
Jamb	STS Hairline/100 Type
Door	STS Hairline Etching (SE2312)
Hall Button	HIP-DA64

<b>50 TYPE</b>	
Jamb	STS Hairline/50 Type
Door	STS Hairline Etching (SE2312)
Hall Button	HIP-DA64

**Note**

1. Colors printed in this catalog may appear different from actual colors.

2. For 10 passenger (700 kg) models and smaller, the central wall pattern on the inner surface of side panels may be omitted due to the division line between the 2 panels.

3. For 11 passenger (750 kg) models and smaller, the operating panel may need to be installed on the side walls due to the narrow width of the front wall.

LUXEN DESIGN COLLECTION

► LXE-01

CAGE DESIGN

Ceiling	CD199B/Art Metal Silver (AM01), LED Bar Type Module (P022), Ceiling Plate (Painted Steel P021)
Car Wall	STS Hairline, STS Hairline Etching (SE2303)
Handrail	STS Hairline 1Pipe (1C), Chrome Bracket
Car Door	STS Hairline Etching (SE2303)
Car Operating Panel	OPP-N521/STS Hairline
Indicator	PI-D110
Flooring	LXE-01 (Deco Tile - DTE2246, DTE2251)



LUXEN DESIGN COLLECTION

► LXE-02

CAGE DESIGN

Ceiling	CD191A/Art Metal Silver (AM08), LED Bar Type Module (P022), Ceiling Plate (Painted Steel P024)
Car Wall	STS Hairline, STS Hairline Etching (SE2311)
Handrail	STS Hairline 1Pipe (1C), Chrome Bracket
Car Door	STS Hairline Etching (SE2311)
Car Operating Panel	OPP-N520/STS Hairline
Indicator	PI-D600
Flooring	LXE-02 (Deco Tile - DTE2125, DTE2126)



ENTRANCE

200U TYPE

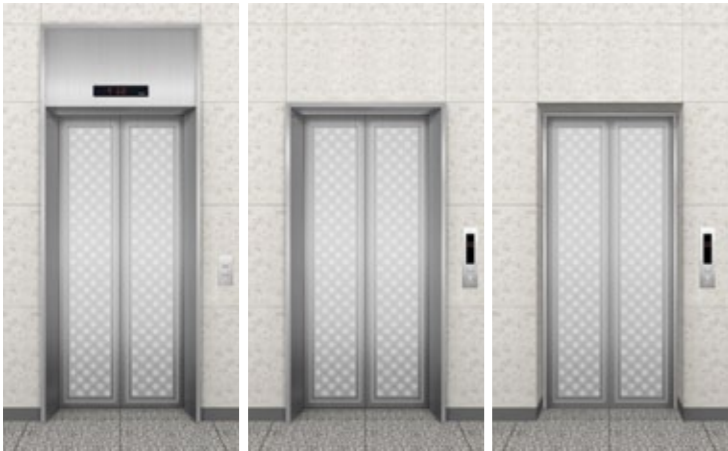
Jamb	STS Hairline/200U Type
Transom Panel	STS Hairline
Door	STS Hairline Etching (SE2303)
Hall Button	HPB-221/STS Hairline
Indicator	PI-D110

100 TYPE

Jamb	STS Hairline/100 Type
Door	STS Hairline Etching (SE2303)
Hall Button	HIP-D221/STS Hairline

50 TYPE

Jamb	STS Hairline/50 Type
Door	STS Hairline Etching (SE2303)
Hall Button	HIP-D221/STS Hairline



200U TYPE

100 TYPE

50 TYPE

**Note**

1. Colors printed in this catalog may appear different from actual colors.

2. For 10 passenger (700 kg) models and smaller, the central wall pattern on the inner surface of side panels may be omitted due to the division line between the 2 panels.

3. Please refer to page 24 for ceiling options for emergency elevators.

ENTRANCE

200U TYPE

Jamb	STS Hairline/200U Type
Transom Panel	STS Hairline
Door	STS Hairline Etching (SE2311)
Hall Button	HPB-620/STS Hairline
Indicator	PI-D600

100 TYPE

Jamb	STS Hairline/100 Type
Door	STS Hairline Etching (SE2311)
Hall Button	HIP-D620/STS Hairline

50 TYPE

Jamb	STS Hairline/50 Type
Door	STS Hairline Etching (SE2311)
Hall Button	HIP-D620/STS Hairline



200U TYPE

100 TYPE

50 TYPE

**Note**

1. Colors printed in this catalog may appear different from actual colors.

2. For 10 passenger (700 kg) models and smaller, the central wall pattern on the inner surface of side panels may be omitted due to the division line between the 2 panels.

3. Please refer to page 24 for ceiling options for emergency elevators.

LUXEN DESIGN COLLECTION

► LXE-03

CAGE DESIGN

Ceiling	CD191B/Art Metal Silver (AM01), LED Bar Type Module (P022), Ceiling Plate (Painted Steel P024)
Car Wall	STS Hairline, STS Hairline Etching (SE2304)
Handrail	STS Hairline 1Pipe (1C), Chrome Bracket
Car Door	STS Hairline Etching (SE2304)
Car Operating Panel	OPP-N520/STS Hairline
Indicator	PI-D110
Flooring	LXE-03 (Deco Tile - DTE2251, DTE2126)



200U TYPE

100 TYPE

50 TYPE

ENTRANCE

200U TYPE

Jamb	STS Hairline/200U Type
Transom Panel	STS Hairline
Door	STS Hairline Etching (SE2304)
Hall Button	HPB-820/STS Hairline
Indicator	PI-D110

100 TYPE

Jamb	STS Hairline/100 Type
Door	STS Hairline Etching (SE2304)
Hall Button	HIP-D820/STS Hairline

50 TYPE

Jamb	STS Hairline/50 Type
Door	STS Hairline Etching (SE2304)
Hall Button	HIP-D820/STS Hairline

Note

1. Colors printed in this catalog may appear different from actual colors.
2. For 10 passenger (700 kg) models and smaller, the central wall pattern on the inner surface of side panels may be omitted due to the division line between the 2 panels.

FIXTURES  
DESIGN

Optimal functionality and  
thoughtful design  
magnify the value of space

CAR OPERATING PANEL

◆  
BUTTON

◆  
HALL BUTTON

◆  
INDICATOR

◆  
CEILING

◆  
HALL LANTERN

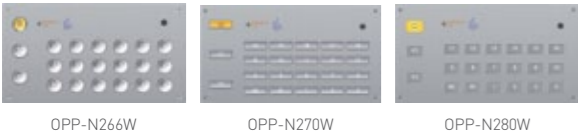
◆  
HANDRAIL

FIXTURES DESIGN

CAR OPERATING PANEL

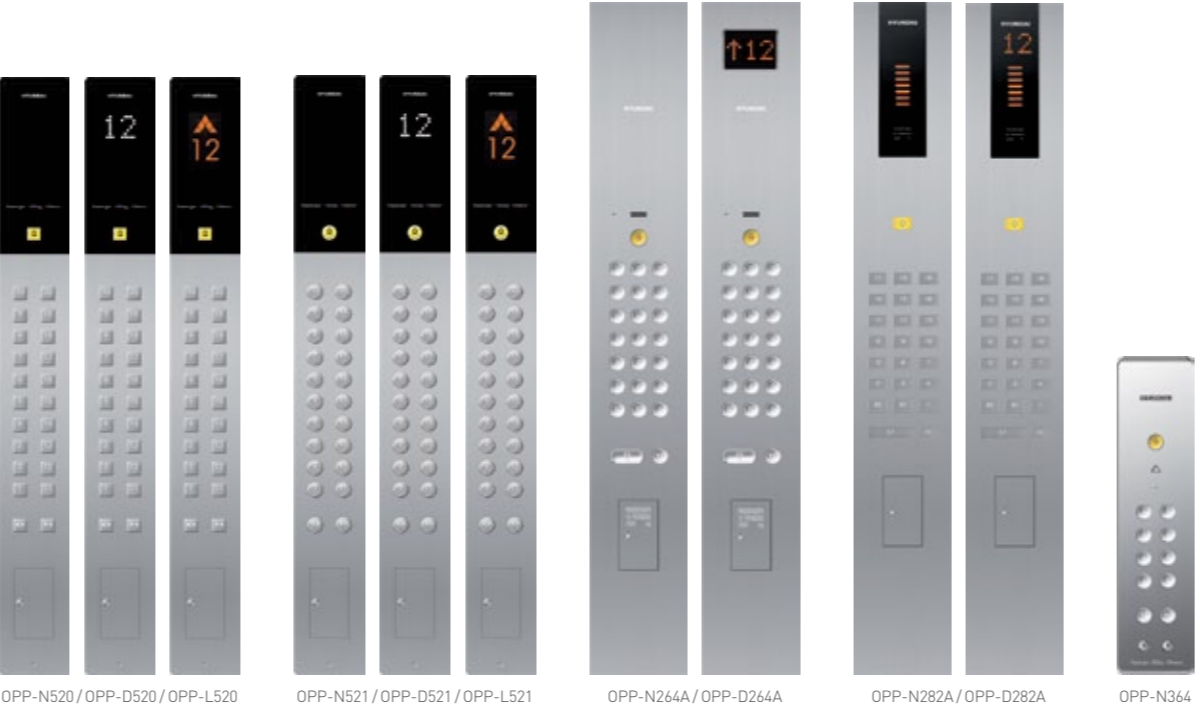
D: DOT TYPE / L: LCD TYPE

Deluxe



Standard

D: DOT TYPE / L: LCD TYPE



HALL BUTTON

D: DOT TYPE / L: LCD TYPE

Deluxe

Boxless type



Box type



\* 90 TYPE buttons not applicable to box type hall buttons.

Standard

Boxless type



Box type



BUTTON

Deluxe



LED lighting - Standard: Yellow gold/Optional: Green

Standard



\* 90 TYPE buttons not applicable to box type hall buttons.

## INDICATOR

D: DOT TYPE / L: LCD TYPE

### Deluxe | Box type



### Boxless type



### Standard | Box type



### Boxless type



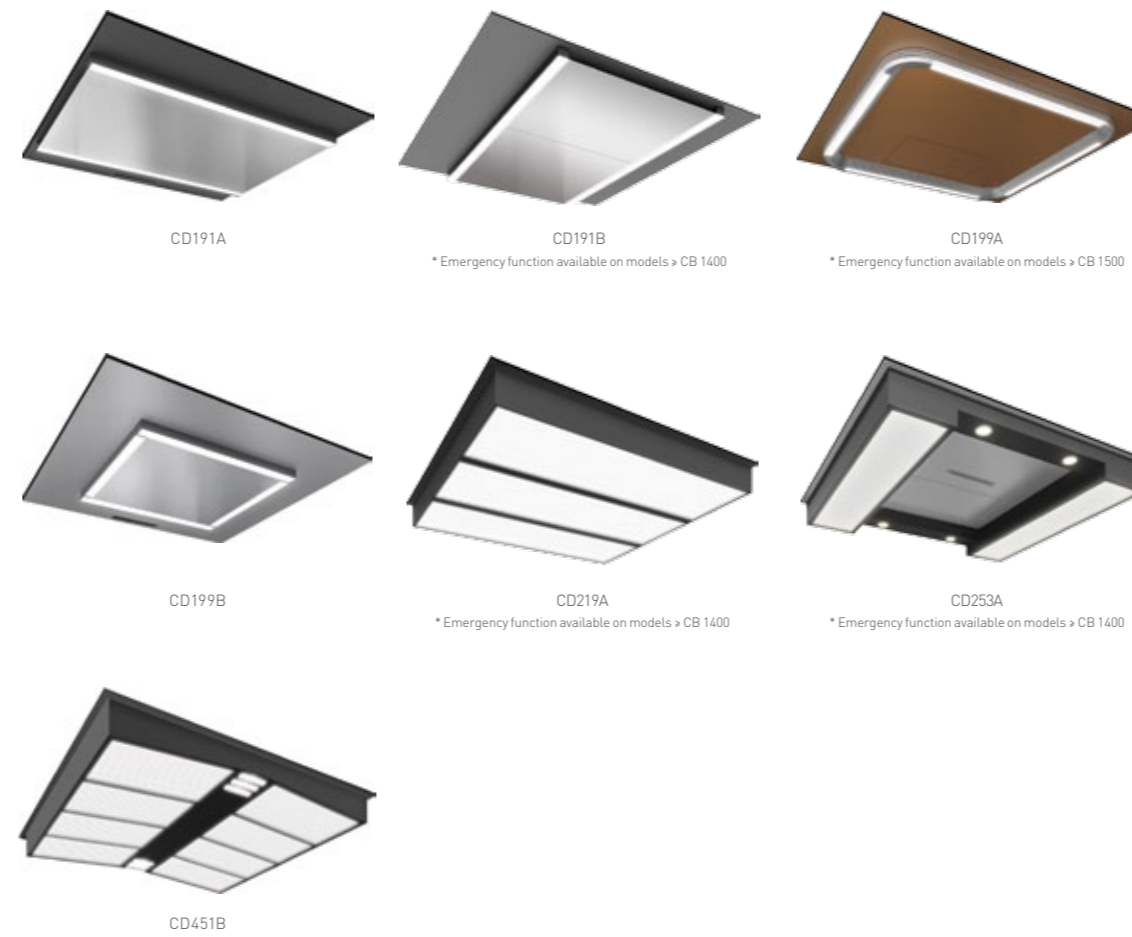
## FIXTURES DESIGN

## CEILING

### Deluxe



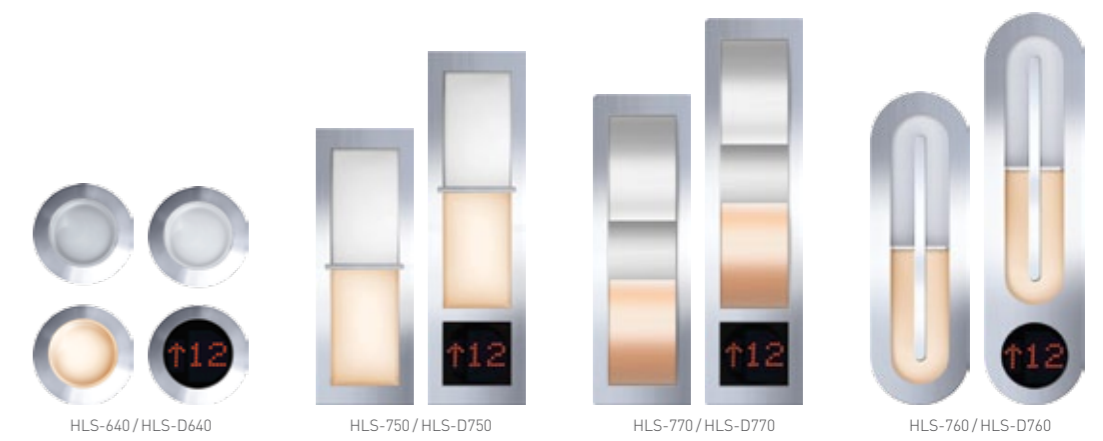
### Standard



\* Colors printed in this catalog may appear different from actual colors.  
\* Ceilings without the "EmergencyFunction" label cannot be used for emergencies.

## HALL LANTERN

### Deluxe | Box type





### Standard | Boxless type

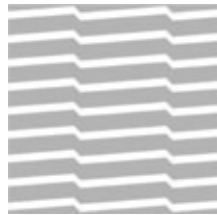


\* Hall lantern colors are lime green when the elevator is going up and yellow gold when it is going down.

# FIXTURES DESIGN

## ETCHING PATTERN

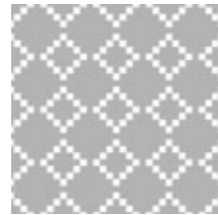
\* Etching patterns in this catalog are 1/3 of the actual size.  
 \*  Relief /  Engraving of etched parts



SE1168



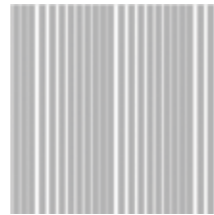
SE1169



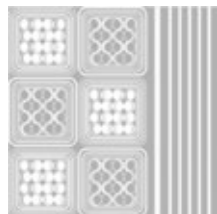
SE1172



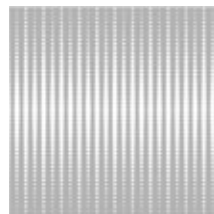
SE1591



SE2302



SE2303



SE2304



SE2305



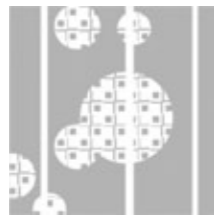
SE2306



SE2307



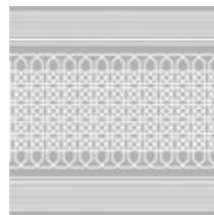
SE2308



SE2309



SE2310



SE2311



SE2312

## PAINTED STEEL

\* Colors printed in this catalog may appear different from actual colors.  
 \* P016, P020, and P021 are metallic colors and may appear different from the actual colors.



P003



P006



P008



P009



P011



P012



P016



P017



P019



P020



P021



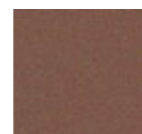
P022



P023



P024



P025

## FLOOR

\* Colors printed in this catalog may appear different from actual colors.

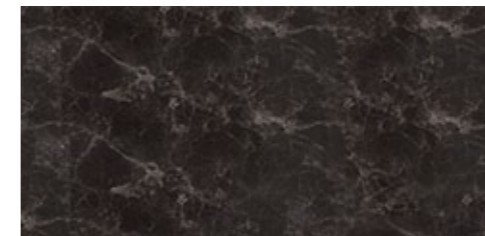
### Deco tile



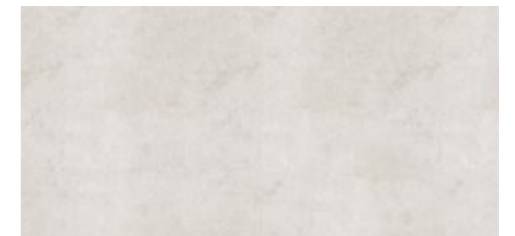
DTE2125



DTE2126



DTE2246



DTE2251

## HANDRAIL

\* Colors printed in this catalog may appear different from actual colors.  
 \* FA-type handrails are not available in elevators for the handicapped.

### Antiviral handrails



1LB (Deluxe)

1FW

1FG

1FB

### Regular handrails



1C

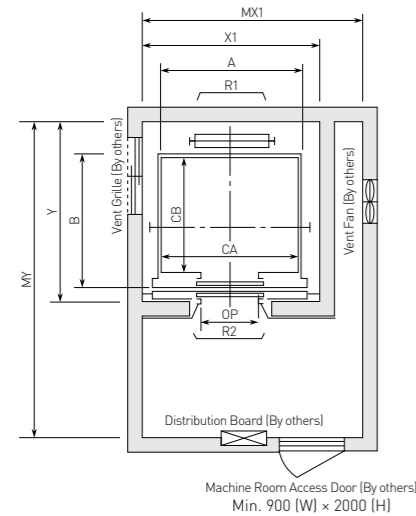
FA

Antiviral material construction protects passengers from harmful viruses which can contaminate handrails due to frequent use.

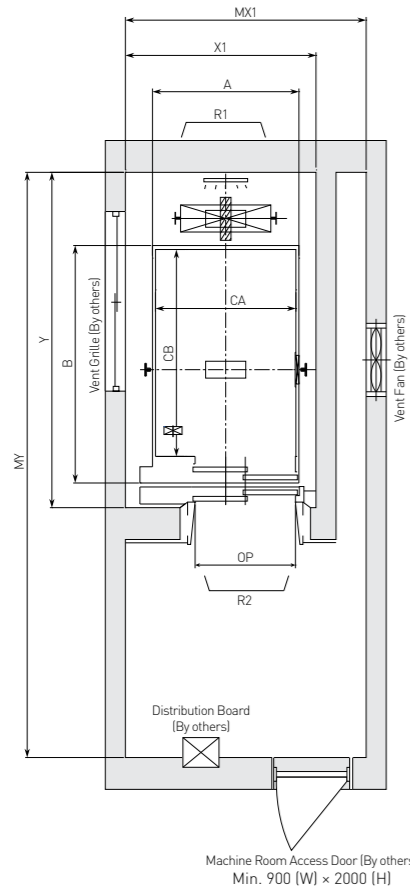
# Hoistway Plan and Section

Hyundai Elevator's top technicians design spaces that maximize satisfaction

## Plan of the Hoistway & Machine Room

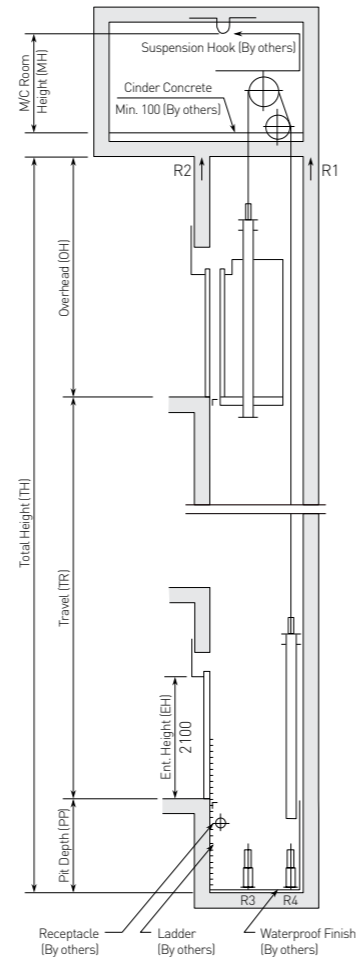


2P-CO



2P-SO

## Section of the Hoistway



## Standard Dimensions & Reactions

### Manufacturer Standard

(Unit: mm)

Speed (m/sec)	Capacity		Opening Type	Opening Size (mm)	Car Size (mm)	Hoistway Size (mm)	Machine Room Size (mm)	M/C Room Reaction (kg)		Pit Reaction (kg)	
	Persons	kg		OP	CA × CB	X1 × Y	MX1 × Y	R1	R2	R3	R4
1.0	6	450	2P-CO	800	1400 × 850	1800 × 1450	2000 × 3200	3600	2000	5400	4500
	8	550		800	1400 × 1030	1800 × 1650	2000 × 3400	4050	2250	6000	4900
	9	600		800	1400 × 1100	1800 × 1700	2000 × 3500	4100	2450	6300	5100
	10	700		800	1400 × 1250	1800 × 1850	2000 × 3600	4200	2700	6800	5400
	11	750		800	1400 × 1350	1800 × 1950	2000 × 3700	4550	2800	7100	5600
	13	900		900	1600 × 1350	2050 × 1950	2300 × 3750	5100	3750	8100	6300
1.5	15	1000		900	1600 × 1500	2050 × 2100	2300 × 3800	5450	4300	8600	6600
	17	1150		1000	1800 × 1500	2350 × 2200	2600 × 3900	6600	5100	11000	8700
	20	1350		1000	1800 × 1700	2350 × 2400	2600 × 4200	7800	6000	12200	9500
	24	1600		1100	2000 × 1500	2550 × 2200	2800 × 4000	8500	6800	13600	10400
	24	1600		1100	2000 × 1750	2550 × 2450	2900 × 4300	8500	6800	13600	10400
	24	1600		1100	2150 × 1600	2700 × 2300	3000 × 4200	8500	6800	13600	10400
2.0	13	900		900	1600 × 1350	2300 × 2150	2800 × 4500	12030	6630	12400	10600
	15	1000		900	1600 × 1500	2300 × 2300	2800 × 4700	12810	6950	13300	11300
	17	1150		1000	1800 × 1500	2500 × 2300	3000 × 4700	13080	7130	14500	12700
	20	1350		1000	1800 × 1700	2500 × 2500	3000 × 5000	14360	7650	16500	13800
	24	1600		1100	2000 × 1500	2700 × 2300	3200 × 4700	15090	8080	18100	14900
	24	1600		1100	2000 × 1750	2700 × 2550	3200 × 5000	15090	8080	18100	14900
2.5	24	1600		1100	2150 × 1600	2850 × 2400	3400 × 4900	15090	8080	18100	14900

### EN81

(Unit: mm)

Speed (m/sec)	Capacity		Opening Type	Opening Size (mm)	Car Size (mm)	Hoistway Size (mm)	Machine Room Size (mm)	M/C Room Reaction (kg)		Pit Reaction (kg)	
	Persons	kg		OP	CA × CB	X1 × Y	MX1 × MY	R1	R2	R3	R4
1.0	6	450	2P-CO	700	1100 × 1100	1550 × 1700	2000 × 3500	3600	2000	5400	4500
	7	550		800	1300 × 1100	1800 × 1700	2000 × 3500	4050	2250	6000	4900
	8	630		800	1100 × 1400	1800 × 2000	2000 × 3800	4200	2500	6400	5200
	9	700		800	1400 × 1100	1800 × 1700	2000 × 3500	4200	2500	6400	5200
	10	800		800	1400 × 1250	1800 × 1850	2000 × 3650	4200	2700	6800	5400
	12	900		800	1400 × 1350	1800 × 1950	2000 × 3750	4550	2800	7100	5600
1.5	13	1000		900	1600 × 1300	2050 × 1900	2300 × 3700	5100	3750	8100	6300
	15	1150		900	1600 × 1400	2050 × 2000	2300 × 3800	5450	4300	8600	6600
	18	1350		1000	1800 × 1400	2350 × 2100	2600 × 3900	6600	5100	11000	8700
	21	1600		1000	1800 × 1600	2350 × 2300	2600 × 4100	7800	6000	12200	9500
	21	1600		1100	2000 × 1700	2550 × 2400	2900 × 4200	8500	6800	13600	10400
	21	1600		1100	2000 × 1700	2550 × 2400	2900 × 4200	8500	6800	13600	10400
2.0	10	800		800	1400 × 1350	2100 × 2150	2600 × 4500	10700	6300	9230	7280
	12	900		900	1600 × 1300	2300 × 2100	2800 × 4500	12030	6630	12400	10600
	13	1000		900	1600 × 1400	2300 × 2200	2800 × 4700	12810	6950	13300	11300
	15	1150		1000	1800 × 1400	2500 × 2200	3000 × 4700	13080	7130	14500	12700
	18	1350		1000	1800 × 1600	2500 × 2400	3000 × 4900	14360	7650	16500	13800
	21	1600		1100	2000 × 1700	2700 × 2500	3200 × 5000	15090	8080	18100	14900

### EN81

(Unit: mm)

Speed (m/sec)	Capacity		Opening Type	Opening Size (mm)		C.WT Drop	Car Size (mm)	Hoistway Size (mm)	Machine Room Size (mm)	M/C Room Reaction (kg)		Pit Reaction (kg)	
	Persons	kg		OP	Drop		CA × CB	X1 × Y	MX1 × MY	R1	R2	R3	R4
1.0	6	450	2P-SO	800	Rear		1100 × 1100	1550 × 1800	2000 × 3600	3600	2000	5400	4500
	7	550		800	Rear		1100 × 1300	1550 × 2000	2000 × 3800	4050	2250	6000	4900
	8	630		900	Side		1100 × 1400	1850 × 1850	2000 × 3800	4100	2450	6300	5100
	9	700		900	Side		1200 × 1400	1950 × 1850	2000 × 3800	4200	2700	6800	5400
	10	800		900	Side		1350 × 1400	2100 × 1850	2000 × 3800	4550	2800	7100	5600
	12	900		900	Side		1300 × 1600	2050 × 2000	2000 × 4200	5100	3750	8100	6300
1.5	13	1000		900	Side		1100 × 2100	1850 × 2550	2000 × 4350	5450	4300	8600	6600
	15	1150		1100	Rear		2100 × 1100	2550 × 1850	2550 × 3900	6600	5100	11000	8700
	18	1350		1000	Side		1200 × 2200	2100 × 2650	2400 × 4400	7800	6000	12200	9500
	21	1600		1100	Side		1300 × 2300	2250 × 2750	2550 × 4500	8500	6800	13600	10400
	21	1600		1200	Side		1400 × 2400	2350 × 2850	2650 × 4600	8500	6800	13600	10400
	21	1600		1200	Side		1350 × 1400	2200 × 2000	2450 × 4500	10700	6300	9230	7280
2.0	11	800		900	Side		1300 × 1600	2250 × 2100	2550 × 4150	12030	6630	12400	10600
	12	900		900	Side		1300 × 1800	2300 × 2300	2600 × 4300	12810	6950	13300	11300
	13	1000		1100	Rear		2100 × 1100	2650 × 1950	2650 × 3950	12810	6950	13300	11300
	15	1150		1000	Side		1200 × 2200	2200 × 2700	2500 × 4750	13080	7130	14500	12700
	18	1350		1100	Side		1300 × 2300	2300 × 2800	2600 × 4850	14360	7650	16500	13800
	21	1600		1200	Side		1400 × 2400	2400 × 2900	2700 × 4950	15090	8080	18100	14900

- ▲ Notes:
- Criteria for using 2,000 mm rail bracket pitches: 1) Rated Speed of 2.0 m/sec. and travel distance between 100 m ~ 150 m  
2) Rated Speed of 2.5 m/sec.
  - Dimensions are for standard size cars and openings. For non-standard cars and openings, please contact Hyundai.
  - For installation of safety gear on the counterweight side, please contact Hyundai.

## Overhead & Pit Depth

(Unit: mm)

Duty Load (kg)	Speed (m/s)	Overhead (OH)	Pit Depth (PP)	M/C Room Height (MH)
450 ~ 1150	1.0	CH + 1850	1250	2200
	1.5	CH + 2000	1300	2400
	1.75	CH + 2050	1350	2400
	2.0	CH + 2200	1900	2600
1350 ~ 1600	2.5	CH + 2600	2200	2600
	1.0	CH + 1850	1350	2200
	1.5	CH + 2000	1400	2400
	1.75	CH + 2050	1450	2400
	2.0	CH + 2200	2000	2600
	2.5	CH + 2600	2200	2600

\*CH: [External] Car Height

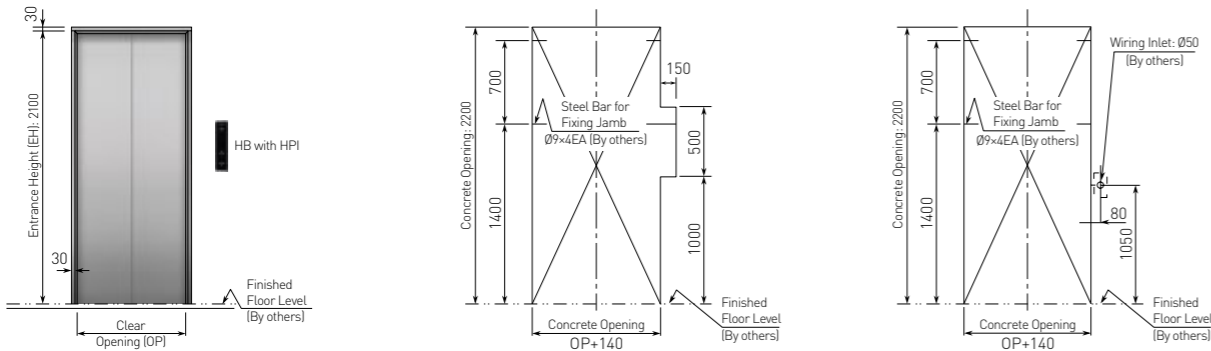
### Notes:

- Dimensions conform to EN81-1.
- OH assumes that the distance between the car's top safety guard and shaft wall is less than 850 mm.
- Machine room's ceiling needs to be 200 mm higher if the traction machine has a double isolation pad.
- Request specifications for emergency exits if the height of non-stopping floor is greater than 11 m.
- Machine room temperature must be kept below 40 °C and humidity below 90%. Install ventilating fans and/or air conditioners if necessary.

Entrance Layouts

Taking into consideration space utility and passenger comfort to optimize entrance layouts

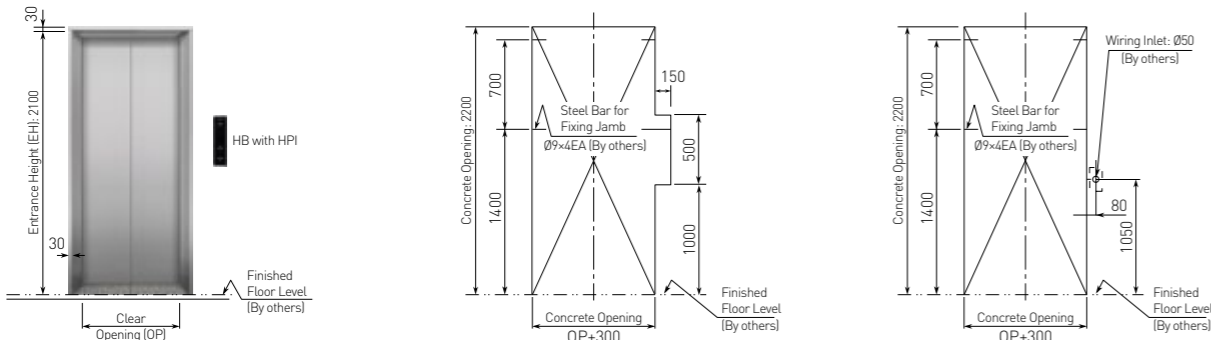
Entrance Plans



JP050 TYPE (Standard)

For box-type buttons

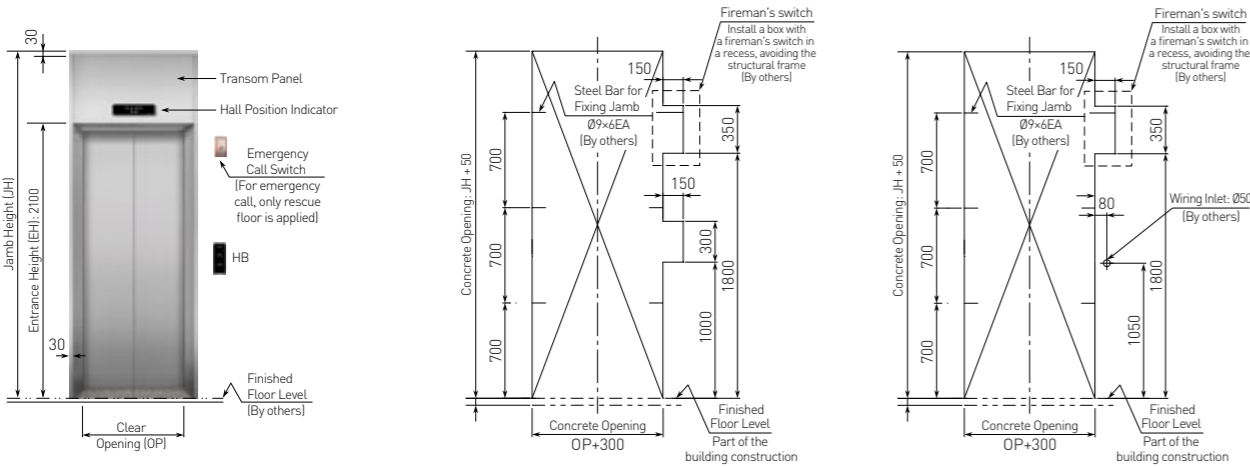
For boxless buttons



JP100 TYPE (Standard)

For box-type buttons

For boxless buttons

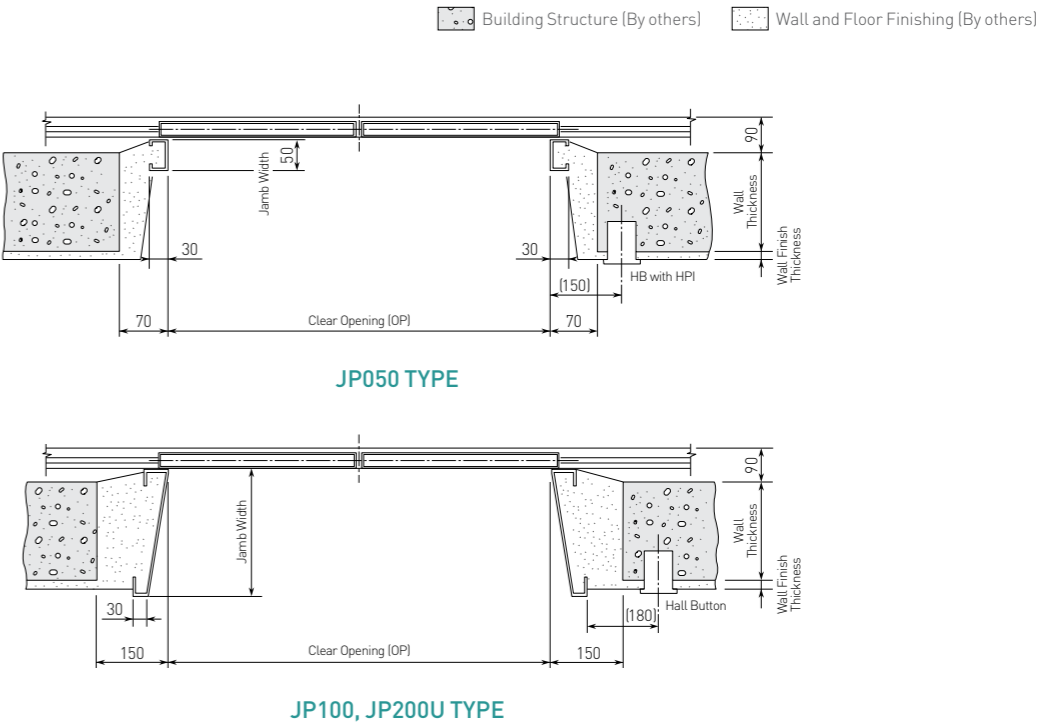


JP200U TYPE (Optional)

For box-type buttons and fireman's switch (Rescue floor)

For boxless buttons and fireman's switch (Rescue floor)

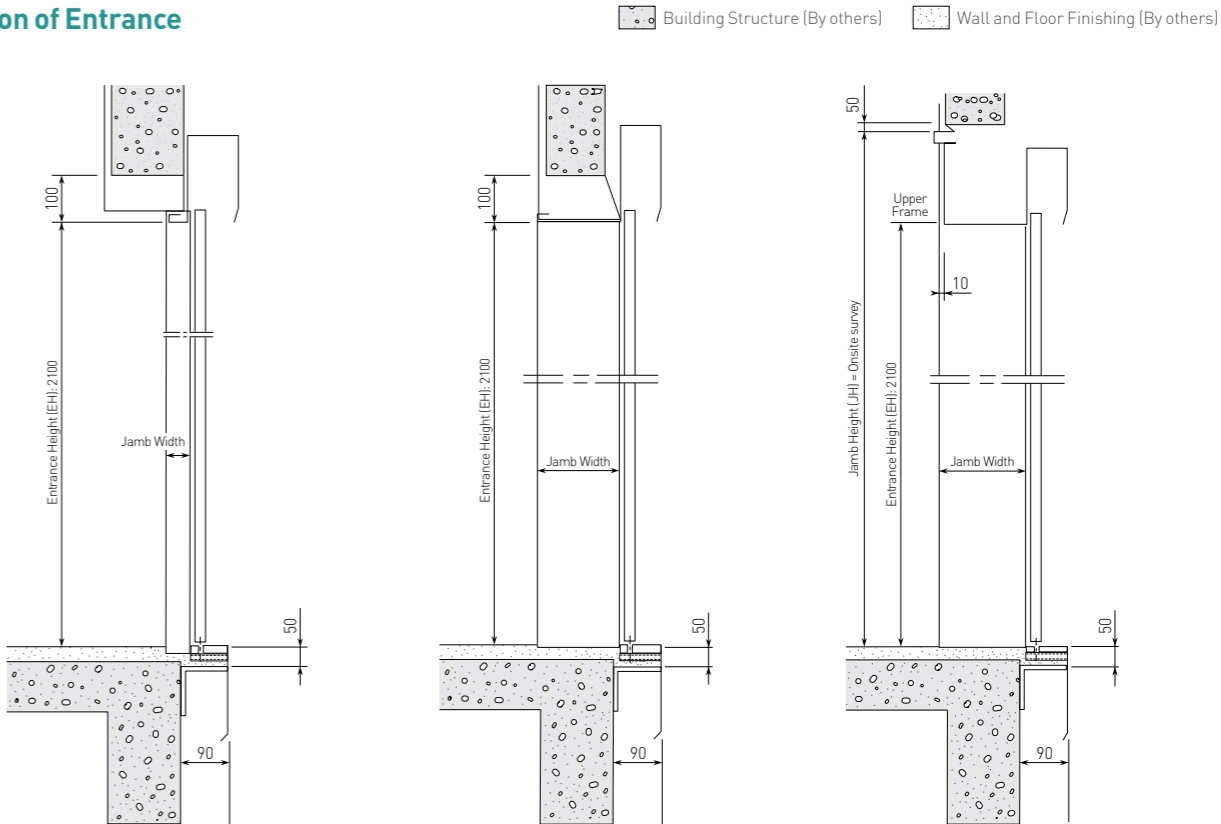
Plan of Entrance



JP050 TYPE

JP100, JP200U TYPE

Section of Entrance



JP050 TYPE

JP100 TYPE

JP200U TYPE

▶

Constructions Excluded from Our Supply Scope

Construction and electric work not included in the elevator contract

Construction Work

Hoistway

- Forming holes on the wall surrounding the exit on each floor (exit, hall button, hall lantern, etc.), and finishing the walls and floors after installing the elevator (including mortar filling)
- Installation of steel frame to fix the left/right jambs on the exit
- Installation of ladder for pit inspection
- Waterproofing work inside the pit and finishing work after attaching the buffer
- Installation of hoistway partitions or separating beams (when necessary)
- Removing various tie pins and molds
- Others (items indicated on the floor plan)
- Construction of concrete structures (thickness of 150 mm or above) or beam structures that can fasten the rail brackets in the hoistway wall
- Supplying storage for construction tools and materials free of charge
- Destruction and finishing of concrete structures that are not constructed as indicated on the blueprint

- Installation of lighting within hoistway (install lighting of 100 Lux or above on upper and lower part of the hoistway)
- Installation of tensile beam or hook that is designed to lift the machine to the ceiling of hoistway

Machine Room

- Forming holes for machines and ropes on the floor, finishing on cinder concrete, and installation of those indicated on the floor plan
- Installation of pulley beam or hook on the ceiling of machine room
- Installation of reinforcement beam on machine room floor (when necessary)
- Supplying water used for construction free of charge
- Supplying storage for construction tools and materials free of charge

Electric Work

Hoistway

- Installation of natural or artificial lighting of 50 Lux or above (measured from the floor) on platform of each floor (150 Lux in case of an elevator for the handicapped)
- Piping and wiring work from monitoring panel to hoistway when monitoring panel is installed
- Piping and wiring work when CCTV is installed
- Others (items indicated on the floor plan)
- Wiring work on power system within the hoistway for supplying power and lighting (refer to the floor plan for building power facilities regarding the capacity of power facilities.)
- Installation of distribution box for elevator (including N.F.B) on electrical room (install near the hoistway, refer to the floor plan for building power facilities regarding the capacity of power facilities.)
- Construction for power facilities to maintain the voltage regulation of distribution source within +5% to -10% and lighting within ±2%
- Piping and wiring work on lighting outlet for pit inspection
- Supplying power needed during installation and commissioning free of charge
- Piping and wiring work on emergency communication device between elevator control panel, central control  
[Wire specifications: UTP 0.5 mm × 2 P per each elevator]

- 1) Communication device that connects the inside and outside of the elevator should be installed redundantly on the area where the managing personnel is stationed (security office, electric room, and central control room). In case of the facility where the managing personnel is stationed in only one place, however, only one communication device may be installed.
- 2) Also, a communication device that automatically requests for help to maintenance company or self-inspector should be installed in order to deal with the situation where the internal communication is not established.

Machine Room

- Piping and wiring work outside the hoistway when interphone is installed on places other than the machine room
- Construction of lighting and lighting outlets for inspection in machine room
- Supplying power needed during installation and commissioning free of charge
- Installation of lighting for power system and cage, and construction of machine room incoming panel and its wiring for emergency power
- Installation of permanent lighting that can be separated from the power for elevator and provide light of 200 Lux or above from the floor in machine room

Matters to Note

- Exit for machine room should be made of fire-proof material and should be installed in a structure that does not lead to other places.
- Do not install ducts or pipes for other purposes (electricity, water, gas, hydrant) on the hoistway and walls inside the machine room.
- Lower part of pit should not be used as residence, pathway, or for other purposes.
- Power and voltage regulation should be within +5% to -10%.
- Temperature in machine room should be 40 °C and humidity should be 90% or below. Be sure to install the entilation window, ventilator, or other airconditioning facilities to prevent generation of dust or poisonous gas inside the machine room.

- ※ When you wish to build the hoistway in steel frame, please contact us. [Steel frame construction for hoistway is excluded from our supply scope.]
- ※ Construction errors: Inner hoistway size that is indicated on the blueprint of this catalog is the minimum size that is designed to fit the size of the elevator interior. So, the construction error limit for hoistway width and overall height is ±30 mm.
- ※ Calculation equation for heat generation in machine room (based on one elevator)

Q: (kcal/H) = W × V × F × N  
W: Loading capacity (kg)  
V: Rated speed (m/min)

N: Number of elevators  
F: Coefficient based on control type (1/42: VWF)

\* Following construction and electric works are not included in our supply scope for elevators. These should be carried out by the building construction companies.

Power Supply Plan

[220 V/380 V]

Load (kg)	Speed (m/sec)	Motor Capacity (kW)	MCCB Capacity of Building [A]		Power Supply Capacity (kVA)		Power Cable Size (mm²)		Earth Wire Size (mm²)		Starting Power (kVA/Car)
		Korea	1 Car	2 Cars	1 Car	2 Cars	1 Car	2 Cars	1 Car	2 Cars	
450	1.0	2.8	20/20	30/20	6	11	4/4	8/4	6/6	6/6	12
	1.5	4.2	30/20	50/30	8	16	7/4	16/6	6/6	6/6	16
	1.75	4.9	30/20	50/30	10	19	8/4	16/6	6/6	6/6	19
550	1.0	3.4	20/20	40/20	7	13	5/4	10/4	6/6	6/6	14
	1.5	5.1	30/20	50/30	10	19	8/4	16/6	6/6	6/6	19
	1.75	5.9	30/20	60/40	11	22	10/4	18/10	6/6	10/6	21
600	1.0	3.7	20/20	40/30	8	15	6/4	11/6	6/6	6/6	16
	1.5	5.6	30/20	60/40	11	21	9/4	17/10	6/6	10/6	21
	1.75	6.5	40/20	75/40	13	25	11/4	25/10	6/6	10/6	25
700	1.0	4.3	30/20	50/30	9	17	7/4	16/6	6/6	6/6	18
	1.5	6.5	40/20	75/40	13	25	11/4	25/10	6/6	10/6	25
	1.75	7.5	40/30	100/50	15	29	13/6	35/16	6/6	16/6	29
750	1.0	4.6	30/20	50/30	9	18	8/4	16/6	6/6	6/6	18
	1.5	6.9	40/20	75/40	13	26	12/4	25/10	6/6	10/6	25
	1.75	8.1	40/30	100/50	15	30	13/6	35/16	6/6	16/6	29
900	2.0	9.2	50/30	100/60	18	36	16/6	35/16	6/6	16/10	35
	1.0	5.6	30/20	60/40	11	21	9/4	17/10	6/6	10/6	21
	1.5	8.3	50/30	100/50	16	31	16/6	35/16	6/6	16/6	31
1000	1.75	9.7	50/30	100/60	18	36	16/6	35/16	6/6	16/10	35
	2.0	11.1	60/40	125/75	21	41	19/10	50/25	10/6	25/10	40
	2.5	13.8	75/50	150/100	27	53	25/16	70/35	10/6	25/16	52
1000	1.0	6.2	40/20	75/40	12	23	10/4	25/10	6/6	10/6	23
	1.5	9.2	50/30	100/60	18	36	16/6	35/16	6/6	16/10	35
	1.75	10.8	60/40	125/75	21	41	18/10	50/25	10/6	25/10	40
1150	2.0	12.3	75/40	125/75	23	46	25/10	50/25	10/6	25/10	44
	2.5	15.4	75/50	150/100	29	58	26/16	70/35	10/6	25/16	56
1150	1.0	7.1	40/20	75/40	14	27	12/4	25/10	6/6	10/6	27
	1.5	10.6	60/30	125/60	20	40	18/6	50/16	10/6	25/10	38
	1.75	12.4	75/40	125/75	23	46	25/10	50/25	10/6	25/10	44
1350	2.0	14.1	75/40	125/100	26	52	25/10	50/35	10/6	25/16	50
	2.5	17.7	100/60	175/125	33	66	35/16	95/50	16/10	25/25	63
1350	1.0	8.3	50/30	100/50	16	31	16/6	35/16	6/6	16/6	31
	1.5	12.5	75/40	125/75	23	46	25/10	50/25	10/6	25/10	44
	1.75	14.5	75/50	125/100	27	54	25/16	50/35	10/6	25/16	52
1600	2.0	16.6	75/50	150/100	30	60	28/16	70/35	10/6	25/16	57
	2.5	20.7	100/75	200/125	40	79	35/25	95/50	16/10	25/25	76
1600	1.0	9.9	50/30	100/60	19	37	16/6	35/16	6/6	16/10	37
	1.5	14.8	75/50	150/100	27	54	25/16	70/35	10/6	25/16	52
	1.75	17.2	75/50	150/100	31	62	29/16	70/35	10/6	25/16	59
1600	2.0	19.7	100/60	175/125	36	72	35/16	95/50	16/10	25/25	69
	2.5	24.6	125/75	225/150	41	82	50/25	95/70	25/10	35/25	78

▲ Notes: 1. Power feeder sizes are for wiring up to 50 m from the elevator machine room to the power source. For distances greater than 50 m, please use the following formula:

Cable size (mm²) =  $\frac{\text{Cable length (m)}}{50}$  × Size in the above (mm²)

- Cable sizes are for copper wires inside electro-metallic tubing.
- For power requirements for 3 cars or more, please contact Hyundai.
- Machine room temperature must be kept below 40 °C and humidity below 90%. Install ventilating fans and/or air conditioners if necessary.

# Standard & Optional Features

Feature	Description	Standard	Optional
Simplex Selective Collective Operation	Operation is carried out completely automatically when a call is registered.	◆	
Car Door Safety Edge with Single Side	A safety edge that runs down the full height of the door causes the door to reopen when it detects a person or obstacle while closing.	◆	
Automatic Car Light & Fan Turn-off	Car illumination and fan are turned off automatically when the car is idle to save energy.	◆	
Landing Door Interlock Switch	A switch integrated into the door operator prevents the car from moving when the doors are open. It locks doors completely while the car is operating to impede the opening of doors from the outside.	◆	
Interphone (Intercom)	An interphone system provides emergency communication between passengers in the car and personnel in the machine room, maintenance room, or security office.	◆	
Overload Holding Stop	A buzzer sounds and the car does not operate when passenger load exceeds maximum capacity. The buzzer stops, doors close, and the elevator starts to operate when passengers get off and weight is brought below the limit.	◆	
Safety Drive Operation	If a car stops between floors during normal operation and the safety device does not work, the car will automatically move to the nearest floor at a low speed, open its doors, and allow passengers to get off.	◆	
Parking Operation	Elevators can be automatically parked at a predetermined floor with doors closed and lights and ventilation turned off.		◆
Multi-beam Device for Car Doors	Multi-beams from the top to the bottom of the door detect obstructions and force the door to remain open or to reopen before it hits the obstruction.		◆
Anti- nuisance Operation	When there is a significantly larger number of calls registered than the number of passengers, the elevator prevents unnecessary operation by canceling all calls entered after it arrives at the nearest floor.		◆
Emergency Fire Operation	Cars return to a predetermined floor in the event of fire to help evacuate passengers safely.	◆	
Voice Synthesizer	A voice synthesizer directs passengers with audible operational information, such as car direction, floor landed, and emergency alerts.		◆
Self-generated Power Operation	Power is supplied from the building's power generator and elevators operate under emergency power mode during power outages.		◆
Emergency Fireman's Service	Firemen can use elevators parked at a specific floor to support fire-fighting operations in the event of a fire.	◆	
ELD (Emergency Landing Device)	Elevators are sent to the nearest floor using power from a rechargeable battery when power outages occur and there is no emergency power in order to prevent trapping passengers.	◆	
Attendant Operation	The elevator's operating mode can be switched from its regular automatic mode to manual mode using the attendant's switch on the COP.		◆
Emergency Earthquake Operation	An earthquake sensor detects tremors and forces the elevator to stop at the nearest floor with its door fully open, preventing further operation.		◆

▲ **Notes:** For more information on the operation and additional service functions, please contact Hyundai Elevator.



# GLOBAL NETWORK

You can meet hyundai elevator at landmarks in major cities all around the world.

## AFRICA

**EGYPT**  
T. 20-1-066628331  
E. overseas@iet-hyundaelevator.com

**ETHIOPIA**  
T. 251-911-503-000  
E. ieethiopia1@gmail.com

**KENYA**  
T. 254-722-667984  
E. lyall@skytechelevators.com

**LIBYA**  
T. 218-91-735-0745  
E. info@lec\_hyundaelevator.com

**NIGERIA**  
T. 234-803-7352222  
E. nicolas@orionelevators.com

**TUNISIA**  
T. 216-71-886-980  
E. ideal.commercial@gnet.tn

## ASIA

**BANGLADESH**  
T. 88-017-13209212  
E. zahid@edgeworksbd.com

**CAMBODIA**  
T. 855-23-888-199  
E. charles@ggear.com.kh

**CHINA**  
[Head Office (Factory)]  
T. 86-21-6485-8600  
E. 2017407@hdel.co.kr

**HONG KONG**  
T. 86-755-2585-5903  
E. hyundaisz@naver.com

**INDIA**  
T. 91-20-3250-2190  
E. mmtwani@kcl.kineticindia.com

**INDONESIA**  
T. 62-21-631-8444  
E. helindo@dnet.net.id

**JAPAN**  
T. 81-3-3436-5117  
E. yoshimi-saitoh@daiko-s.co.jp

**MALAYSIA**  
T. 603-6733-2999  
E. brian.lee@hem.com.my

**MONGOLIA**  
T. 976-11-7015-3333  
E. khishigbaatar@hyundai-elevator.mn

**MYANMAR**  
T. 959-400-444598  
E. info@integral-ltd.com

**PHILIPPINES**  
T. 632-716-0905  
E. hyco@pldtdsl.net

**SRILANKA**  
T. 94-11-2629208  
E. rienzie@abansgroup.com

**THAILAND**  
T. 660-2348-8046  
E. monchaika@loxley.co.th

**VIETNAM**  
T. 84-4-6282-2978  
E. sbpark@hdel.co.kr

## EUROPE & CIS

**ARMENIA**  
T. 971-4-440-49-27  
E. natalya@fd-jcb.am

**AZERBAIJAN**  
T. 994-12-555-1744~46  
E. office@astexnika.com

**KAZAKHSTAN**  
T. 7-717-253-8072  
E. dmitriy@hdel.kz

**KYRGYZSTAN**  
T. 996-312-474205  
E. a918882@hotmail.com

**MAKEDONIA**  
T. 90-216-488-8000  
E. hakan.ek@hmf.com.tr

**POLAND**  
T. 48-61-820-8551  
E. maciej.dziurkiewicz@omilifts.com

**RUSSIA**  
[Moscow]  
T. 7-495-514-00-32  
E. mastersverlift@gmail.com

[Vlad]  
T. 7-423-222-98-73  
E. info@dvc.ru

**TURKEY**  
T. 90-216-488-8000  
E. hakan.ek@hmf.com.tr

**MIDDLE EAST**

**BAHRAIN**  
T. 973-17702468  
E. elevators@nassgroup.com

**IRAN**  
T. 98-21-8869-8727~36  
E. jafari\_hyundai2015@yahoo.com

**IRAQ**  
T. 964-7901336498  
E. arjoon\_co@yahoo.com

**ISRAEL**  
T. 972-3-9630000  
E. elib@ledico.com

**JORDAN**  
T. 962-79-5526-713  
E. m\_bseiso@orange.jo

**KUWAIT**  
T. 965-22-457-925  
E. info@deal-trade.com

**OMAN**  
T. 968-9286-4334  
E. techno.hyundai@gmail.com

**PAKISTAN**  
T. 92-21-34320601~5  
E. iitcpk@gmail.com

**QATAR**  
T. 974-436-6689  
E. info@ietg-hyundaelevator.com

**SAUDI ARABIA**  
T. 966-530-970-318  
E. waqqas@nsc-ksa.com

**SYRIA**  
T. 963-933-234134  
E. terzian@scs-net.org

**UAE**  
T. 971-4-294-4475  
E. dubai@bhnnoe-hyundai.com

**YEMEN**  
T. 967-1-450556  
E. waha62@hotmail.com

**NORTH/SOUTH AMERICA**

**ARGENTINA**  
T. 5411-3220-2878  
E. ogueta@skylift.com.ar

**BRAZIL**  
[Head office (Factory)]  
T. 55-51-3037-8686  
E. syyun@hdel.co.kr

**[Sao paulo (Sales office)]**  
T. 55-11-5102-3380  
E. mrshin@hdel.co.kr

**CHILE**  
T. 56-2-2635-3394  
E. lcid@cyce.cl

**COLOMBIA**  
T. 57-4-444-9297  
E. sgiraldo@solucionesverticales.com.co

**CUBA**  
T. 537-699-3412  
E. habanajdkim@gmail.com

**DOMINICAN REPUBLIC**  
T. 809-566-7474  
E. cesar@eleva.com.do

**ECUADOR**  
T. 593-2254-2831  
E. david.j@a-i.com.ec

**GUATEMALA**  
T. 502-2388-0000  
E. cd.elevatec@grupomisol.com

**MEXICO**  
T. 52-55-5663-2019  
E. yurich@insertechmx.com

**PANAMA**  
T. 507-230-3166  
E. asucre@elevadoresdelistmo.com

**PERU**  
T. 51-1-436-1028  
E. yho77777@gmail.com

**VENEZUELA**  
T. 58-212-232-8263  
E. ojssimon@gmail.com

## Head Office and Factories

2091, Gyeongchung-daero, Bubal-eup, Icheon-si, Gyeonggi-do, Korea

## Seoul Office

7-9 Floors, 194, Yulgok-ro, Jongno-gu, Seoul, Korea (Yeonji-dong)